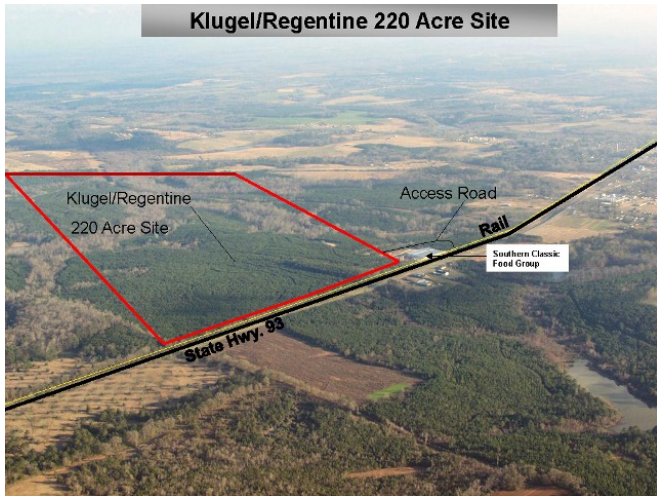


Site Profile

Alabama Site Selection Database

Klugel Regentine Property

City: Brundidge County: Pike
 Micropolitan Area: Troy



General Site Data	
Total Acres	220
Available Acres	220
Additional Available	Yes
Largest Tract	220
Smallest Tract	
Protective Covenants	
Phase 1 Environmental	No
Preliminary Geotechnical:	No
Topography	Flat
Preliminary Wetlands Assessment:	No
Ecological Review:	No
Cultural Resources Review:	No
Zoning	None
Previous Use	Agriculture
Previous Use Description	Agriculture

Site Id: 4813	
Street Address	Highway 93
Nearest City	Brundidge
Within City Limits	No
Zip Code	36010
Latitude	31.7425
Longitude	-85.8187
Located in Industrial Park	No
Park Name	
Within Enterprise Zone	Yes
Within Favored Geographic Area	
Within Renewal Community	

Transportation	
Rail Service	Provider: CSX Transportation Track Status: Adjacent Track Provider #2: Track Status: Adjacent Track
Navigable Waterway	Dock Facility: Not Specified
Nearest Commercial Air City	Montgomery, AL
Miles to Nearest Service:	50

Highways			
Highway Type	Highway Name	Miles to Access	Four Lane
Interstate	I-65	50.0	
Interstate	I-85	50.0	
Federal Highway	231	1.5	Yes
Federal Highway	29	5.0	No
Alabama Highway	93	0.0	No

Price	
Sale Price	\$1,300,000.00
	Total

Land Lease Rate (Annual)	
Negotiable?	Yes
Date Quoted	Oct 31, 2013
Price Comments	

Utilities	
Natural Gas	Provider: SE Alabama Gas District Status: < 500ft Size of Main: 2 in. Main PSI: 50
Water	Provider: City of Brundidge Status: < 500ft Size of Main:
Sewer	Provider: City of Brundidge Status: < 500ft Size of Main:
Electricity	Provider #1: City of Brundidge Status: < 500ft Service to Property (Distribution): Transmission: Provider #2: City of Brundidge
Telecommunications	Provider: Troy Cablevision Fiber Optics: Yes Redundancy: Yes xDSL Available: Yes

Site Profile

Alabama Site Selection Database

Klugel Regentine Property

City: Brundidge County: Pike
Micropolitan Area: Troy

General Comments

Contact Marsha Gaylard, President, Pike County Economic Development Corp. 100 Industrial Blvd, Troy, AL 36081
334-670-2274 or 334-372-2940

Site information is current as of 10/31/13

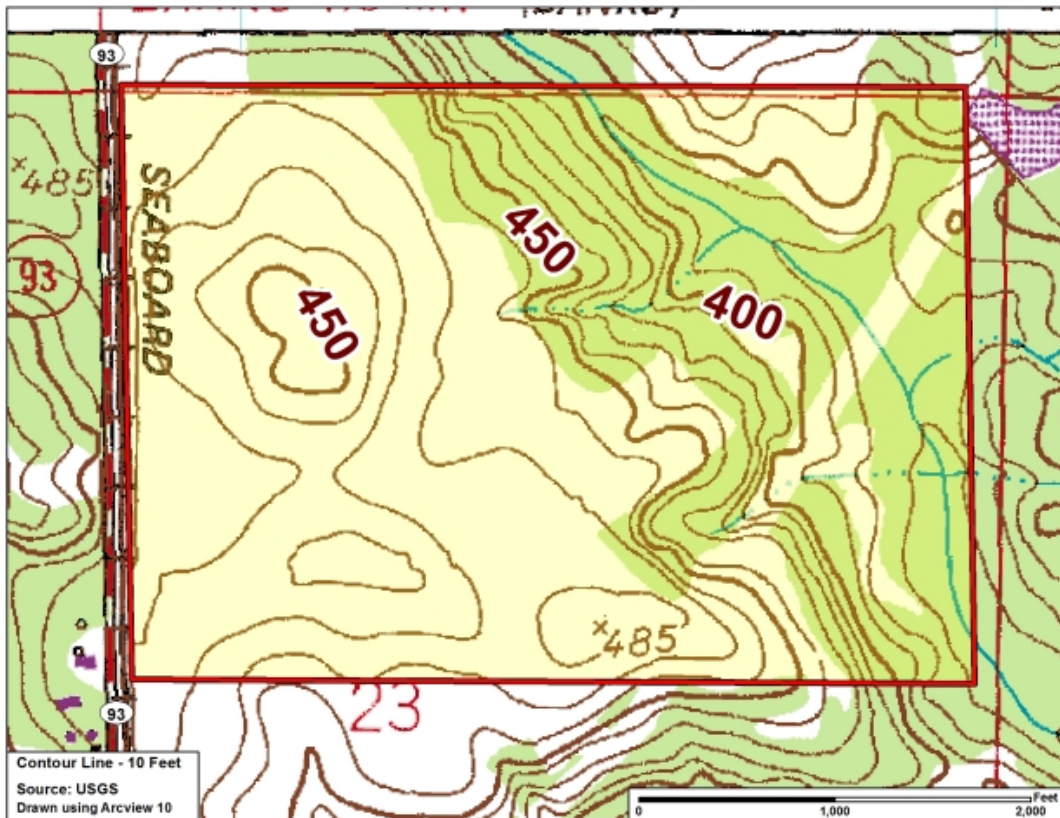
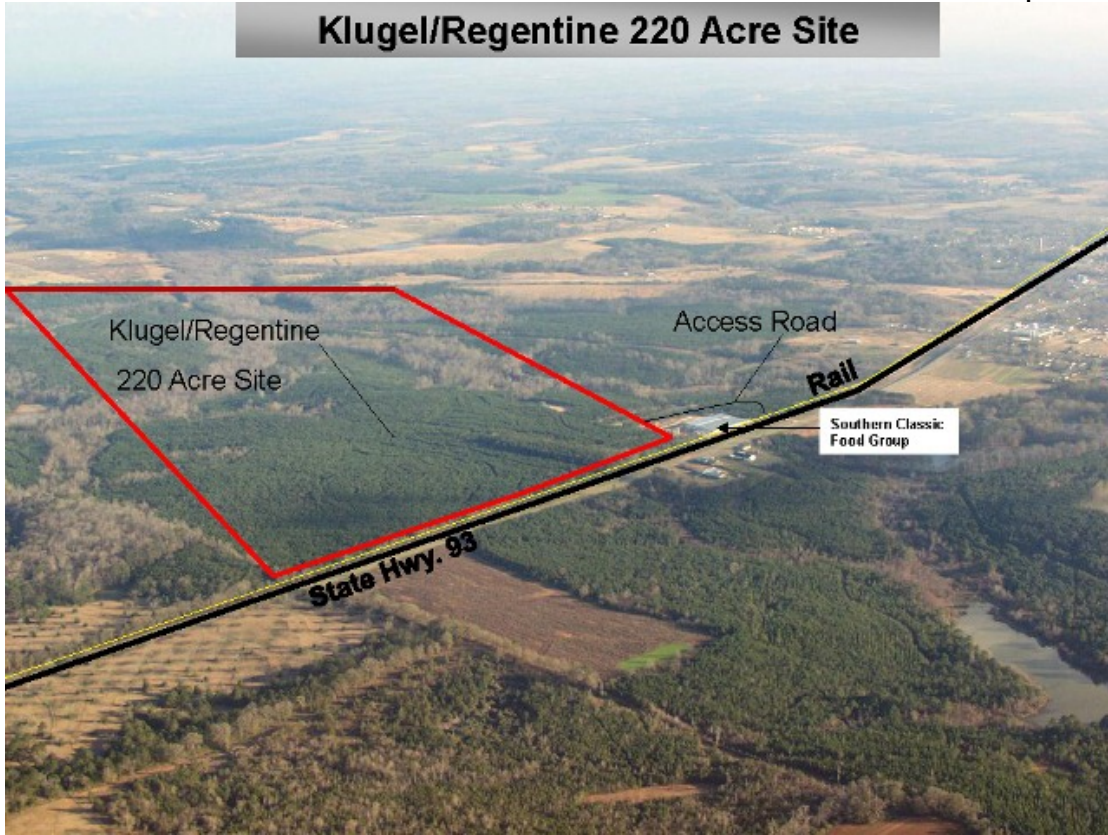
Site Profile

Alabama Site Selection Database

Klugel Regentine Property

City: Brundidge County: Pike
Micropolitan Area: Troy

Klugel/Regentine 220 Acre Site



This information has been secured from sources we believe to be reliable; however, we make no representation or warranties, expressed or implied, as to the accuracy of the information.

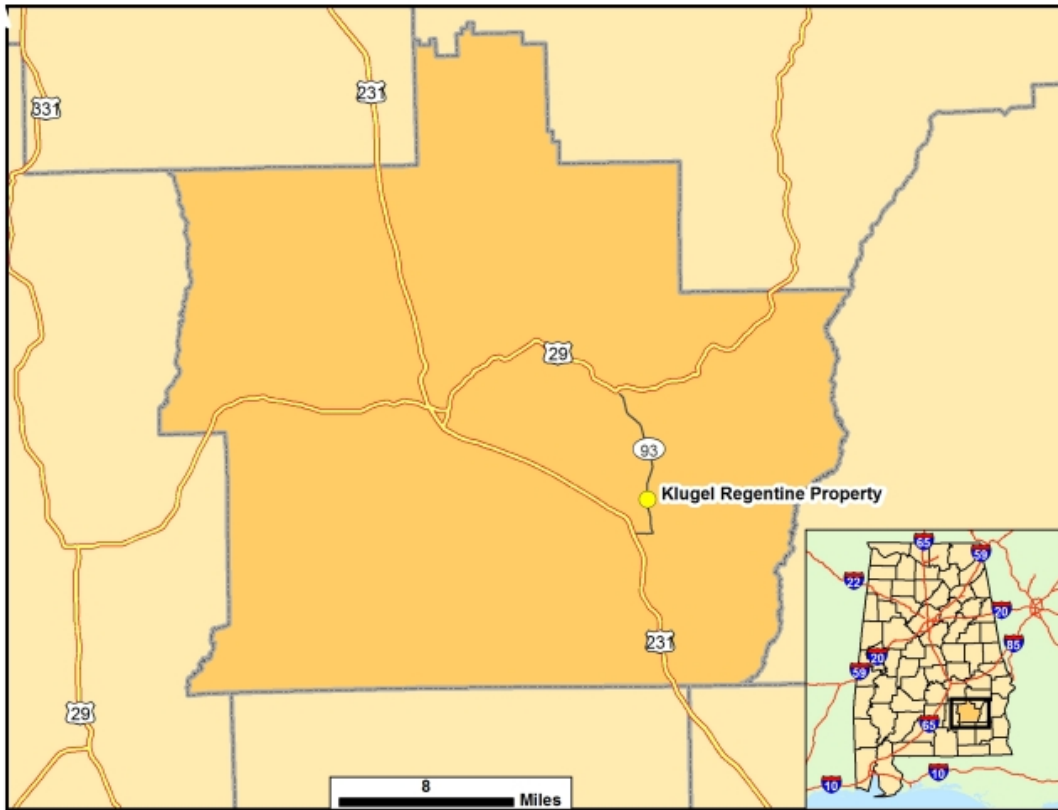
Economic Development Partnership of Alabama
www.edpa.org

Site Profile

Alabama Site Selection Database

Klugel Regentine Property

City: Brundidge County: Pike
Micropolitan Area: Troy



This information has been secured from sources we believe to be reliable; however, we make no representation or warranties, expressed or implied, as to the accuracy of the information.

Economic Development Partnership of Alabama
www.edpa.org

Site Profile

Alabama Site Selection Database

Klugel Regentine Property

City: Brundidge County: Pike
Micropolitan Area: Troy

