

# Site Profile

## Alabama Site Selection Database

### FLOYD-DAVIS PROPERTIES

City: Troy    County: Pike  
 Micropolitan Area: Troy



General Site Data	
Total Acres	52
Available Acres	52
Additional Available	Yes
Largest Tract	29
Smallest Tract	6
Protective Covenants	
Phase 1 Environmental	No
Preliminary Geotechnical:	No
Topography	Slight Rolling
Preliminary Wetlands Assessment:	No
Ecological Review:	No
Cultural Resources Review:	No
Zoning	Agricultural
Previous Use	Agriculture
Previous Use Description	Agriculture

Site Id: 4920  
 Street Address: 1425 Henderson Highway

Nearest City	Troy
Within City Limits	Yes
Zip Code	36079
Latitude	31.7756
Longitude	-86.0043
Located in Industrial Park	No
Park Name	
Within Enterprise Zone	Yes
Within Favored Geographic Area	
Within Renewal Community	

#### Transportation

Rail Service	
Provider:	CSX Transportation
Track Status:	Adjacent Track
Provider #2:	
Track Status:	Not Specified

Navigable Waterway	
Dock Facility:	Port > 50 miles
Nearest Commercial Air City	Montgomery, AL
Miles to Nearest Service:	45

#### Highways

Highway Type	Highway Name	Miles to Access	Four Lane
Interstate	I-65	45.0	
Interstate	I-85	45.0	
Federal Highway	231	2.0	Yes
Alabama Highway	29	3.0	No
Alabama Highway	87	2.0	Yes

Price	
Sale Price	\$254,000.00 Total

Land Lease Rate (Annual)	
Negotiable?	Yes
Date Quoted	Feb 12, 2014

Price Comments  
 Please contact Marsha Gaylard 334-670-2274

#### Utilities

Natural Gas	
Provider:	Southeast Alabama Gas
Status:	< 1500ft
Size of Main:	4 in.
Main PSI:	

Water	
Provider:	Pike County Water Auth.
Status:	< 500ft
Size of Main:	6 in.

Sewer	
Provider:	
Status:	Not Specified
Size of Main:	

Electricity	
Provider #1:	South Alabama Electric Co-op
Status:	Existing Connection
Service to Property	Yes
(Distribution):	
Transmission:	
Provider #2:	

Telecommunications	
Provider:	Troy Cablevision
Fiber Optics:	Yes
Redundancy:	Yes
xDSL Available:	Yes

# Site Profile

## Alabama Site Selection Database

### **FLOYD-DAVIS PROPERTIES**

City: Troy    County: Pike  
Micropolitan Area: Troy

#### General Comments

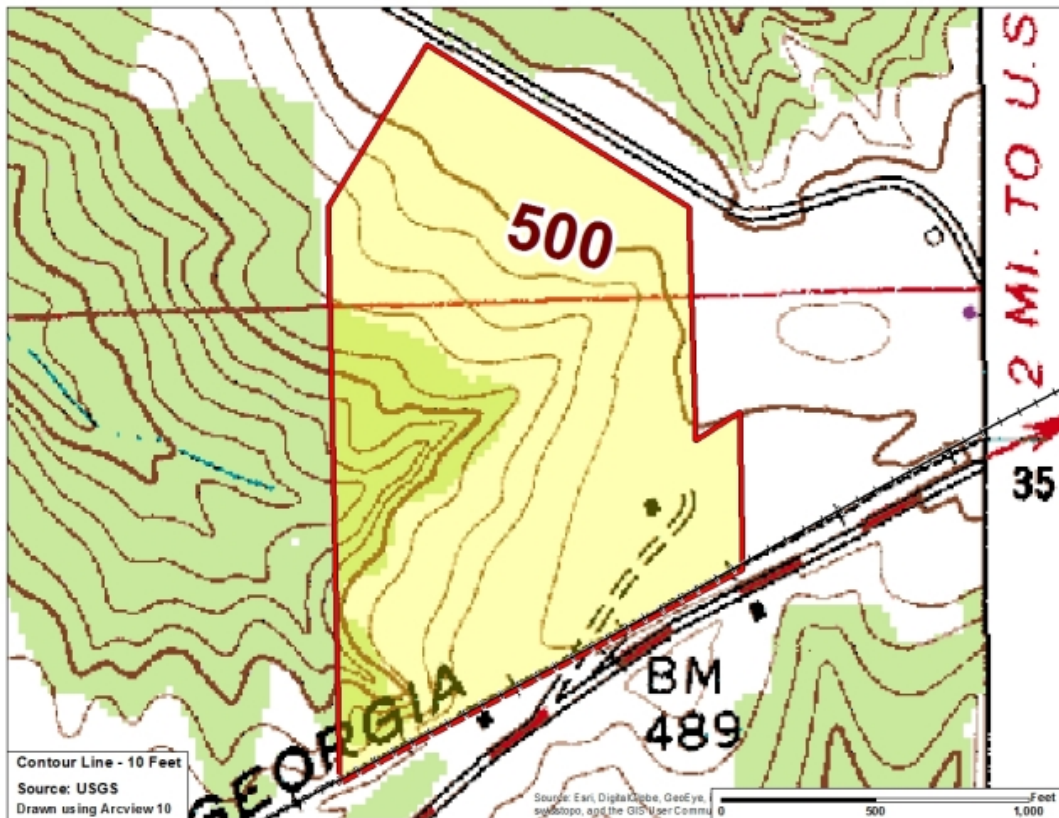
*Site information is current as of 2/12/14*

# Site Profile

## Alabama Site Selection Database

### FLOYD-DAVIS PROPERTIES

City: Troy County: Pike  
Micropolitan Area: Troy



This information has been secured from sources we believe to be reliable; however, we make no representation or warranties, expressed or implied, as to the accuracy of the information.

Economic Development Partnership of Alabama  
www.edpa.org

# Site Profile

## Alabama Site Selection Database

### FLOYD-DAVIS PROPERTIES

City: Troy    County: Pike  
Micropolitan Area: Troy



This information has been secured from sources we believe to be reliable; however, we make no representation or warranties, expressed or implied, as to the accuracy of the information.

Economic Development Partnership of Alabama  
[www.edpa.org](http://www.edpa.org)