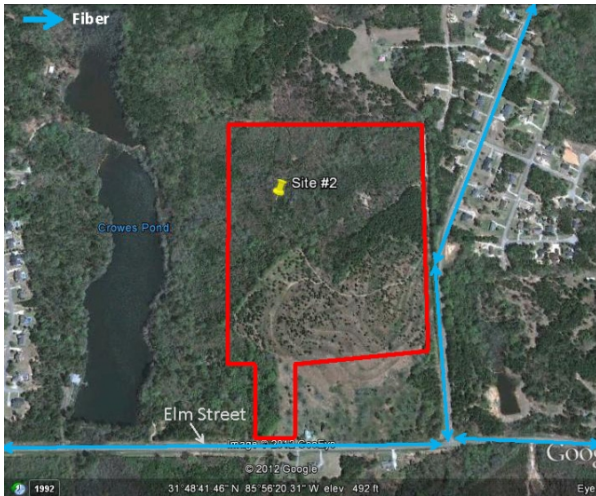


Site Profile

Alabama Site Selection Database

Crow Site

City: Troy County: Pike
 Micropolitan Area: Troy



General Site Data

Total Acres	94
Available Acres	94
Additional Available	
Largest Tract	
Smallest Tract	
Protective Covenants	
Phase 1 Environmental	No
Preliminary Geotechnical:	No
Topography	Slight Rolling
Preliminary Wetlands	No
Assessment:	
Ecological Review:	No
Cultural Resources Review:	No
Zoning	Agricultural
Previous Use	Forest
Previous Use Description	forest

Utilities

Natural Gas	Provider: Southeast Alabama Gas Status: Existing Connection Size of Main: 2 in. Main PSI: 50
Water	Provider: City of Troy Status: Existing Connection Size of Main:
Sewer	Provider: City of Troy Status: Existing Connection Size of Main:
Electricity	Provider #1: City of Troy Status: < 500ft Service to Property Yes (Distribution): Transmission: No Provider #2: Alabama Power Company
Telecommunications	Provider: Troy Cablevision Fiber Optics: Yes Redundancy: Yes xDSL Available: Yes

Site Id: 4828	
Street Address	Elm Street
Nearest City	Troy
Within City Limits	Yes
Zip Code	36081
Latitude	31.8115
Longitude	-85.9389
Located in Industrial Park	No
Park Name	
Within Enterprise Zone	Yes
Within Favored Geographic Area	
Within Renewal Community	

Transportation

Rail Service	Provider: Track Status: Not Specified Provider #2: Track Status: Not Specified
Navigable Waterway	Dock Facility: Not Specified
Nearest Commercial Air City	Montgomery, AL
Miles to Nearest Service:	

Highways

Highway Type	Highway Name	Miles to Access	Four Lane
Interstate	I-65	45.0	
Interstate	I-85	45.0	
Federal Highway	231	3.0	Yes
Federal Highway	29	3.0	No
Alabama Highway	10	3.0	No
Alabama Highway	87	3.0	No

Price	
Sale Price	\$21,125.65 per acre
Land Lease Rate (Annual)	

Negotiable?	Yes
Date Quoted	Mar 4, 2013
Price Comments	

Current Industrial Tenants

None

Site Profile

Alabama Site Selection Database

Crow Site

City: Troy County: Pike
Micropolitan Area: Troy

General Comments

Property is a green field site. Contact Marsha Gaylard Pike County Economic Development Corp. 100 Industrail Blvd, Troy, AL 36081 334-670-2274

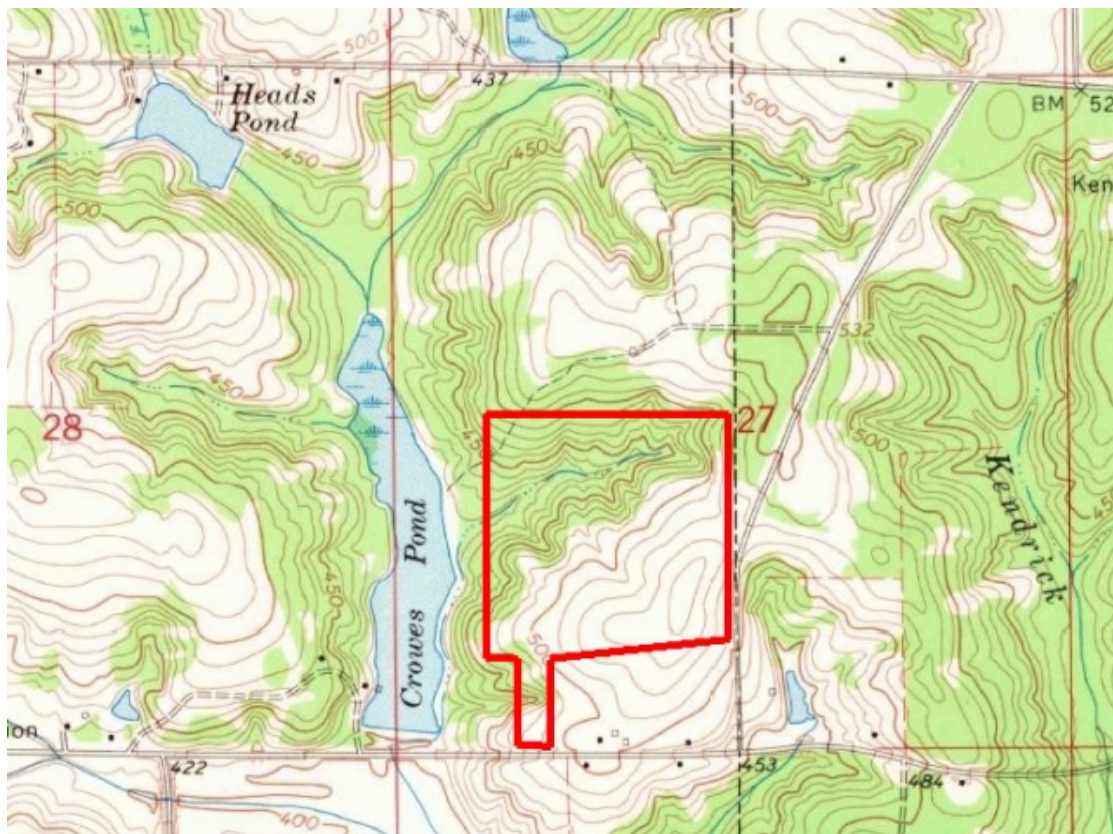
Site information is current as of 3/4/13

Site Profile

Alabama Site Selection Database

Crow Site

City: Troy County: Pike
Micropolitan Area: Troy



This information has been secured from sources we believe to be reliable; however, we make no representation or warranties, expressed or implied, as to the accuracy of the information.

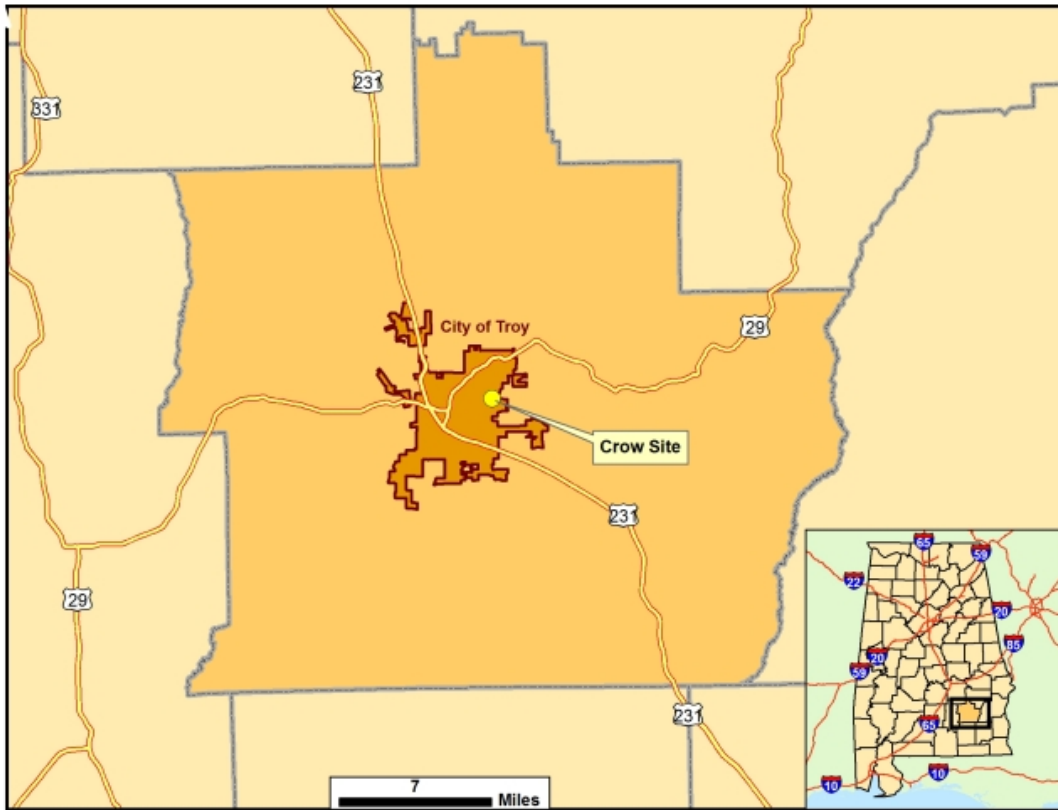
Economic Development Partnership of Alabama
www.edpa.org

Site Profile

Alabama Site Selection Database

Crow Site

City: Troy County: Pike
Micropolitan Area: Troy



This information has been secured from sources we believe to be reliable; however, we make no representation or warranties, expressed or implied, as to the accuracy of the information.

Economic Development Partnership of Alabama
www.edpa.org