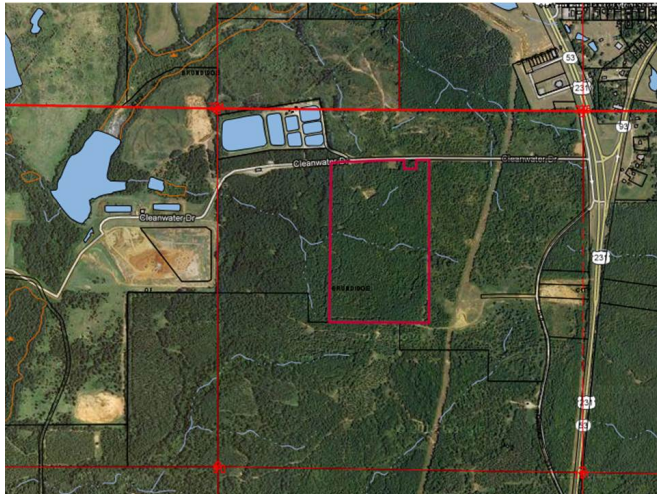


# Site Profile

## Alabama Site Selection Database

### Brundidge Industrial Park

City: Brundidge    County: Pike  
 Micropolitan Area: Troy



General Site Data	
Total Acres	78
Available Acres	78
Additional Available	Yes
Largest Tract	78
Smallest Tract	
Protective Covenants	
Phase 1 Environmental	No
Preliminary Geotechnical:	No
Topography	Flat
Preliminary Wetlands Assessment:	No
Ecological Review:	No
Cultural Resources Review:	No
Zoning	Light Industrial
Previous Use	Agriculture
Previous Use Description	Agriculture

<b>Site Id:</b> 4851	
<b>Street Address</b>	Clean Water Drive
<b>Nearest City</b>	Brundidge
<b>Within City Limits</b>	Yes
<b>Zip Code</b>	36010
<b>Latitude</b>	31.7035
<b>Longitude</b>	-85.8328
<b>Located in Industrial Park</b>	Yes
<b>Park Name</b>	Brundidge Industrial Park
<b>Within Enterprise Zone</b>	Yes
<b>Within Favored Geographic Area</b>	
<b>Within Renewal Community</b>	

Utilities	
<b>Natural Gas</b>	Provider: SE Alabama Gas District Status: < 500ft Size of Main: Main PSI:
<b>Water</b>	Provider: City of Brundidge Status: < 500ft Size of Main:
<b>Sewer</b>	Provider: City of Brundidge Status: < 500ft Size of Main:
<b>Electricity</b>	Provider #1: City of Brundidge Status: < 500ft Service to Property (Distribution): Transmission: Provider #2: City of Brundidge
<b>Telecommunications</b>	Provider: Troy Cablevision Fiber Optics: Yes Redundancy: Yes xDSL Available: Yes

Transportation	
<b>Rail Service</b>	Provider: Track Status: Not Specified Provider #2: Track Status: Not Specified
<b>Navigable Waterway</b>	Dock Facility: Not Specified
<b>Nearest Commercial Air City</b>	Montgomery, AL
Miles to Nearest Service:	40

Highways			
Highway Type	Highway Name	Miles to Access	Four Lane
Interstate	I-65	50.0	
Interstate	I-85	50.0	
Federal Highway	231	0.0	Yes
Federal Highway	29	1.0	No
Alabama Highway	93	1.0	No

<b>Price</b>	
<b>Sale Price</b>	\$150,000.00 Total

<b>Land Lease Rate (Annual)</b>	
---------------------------------	--

<b>Negotiable?</b>	Yes
<b>Date Quoted</b>	Mar 4, 2013

**Price Comments**  
 Financing available as low as zero percent, contact Marsha Gaylard for more details. 334-670-2274

# Site Profile

## Alabama Site Selection Database

### **Brundidge Industrial Park**

City: Brundidge    County: Pike  
Micropolitan Area: Troy

#### General Comments

Contact: Marsha Gaylard, President  
Pike County Economic Development Corp.  
100 Industrial Blvd.  
Troy, AL 36081  
334-670-2274

*Site information is current as of 3/4/13*

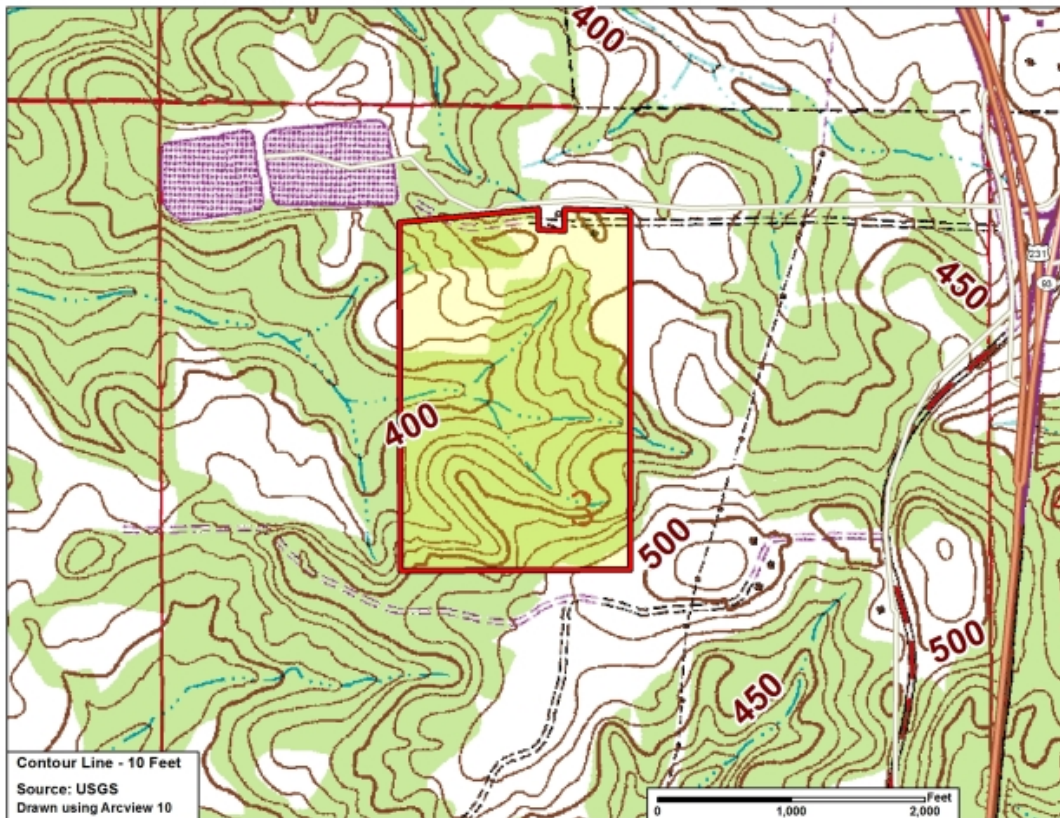
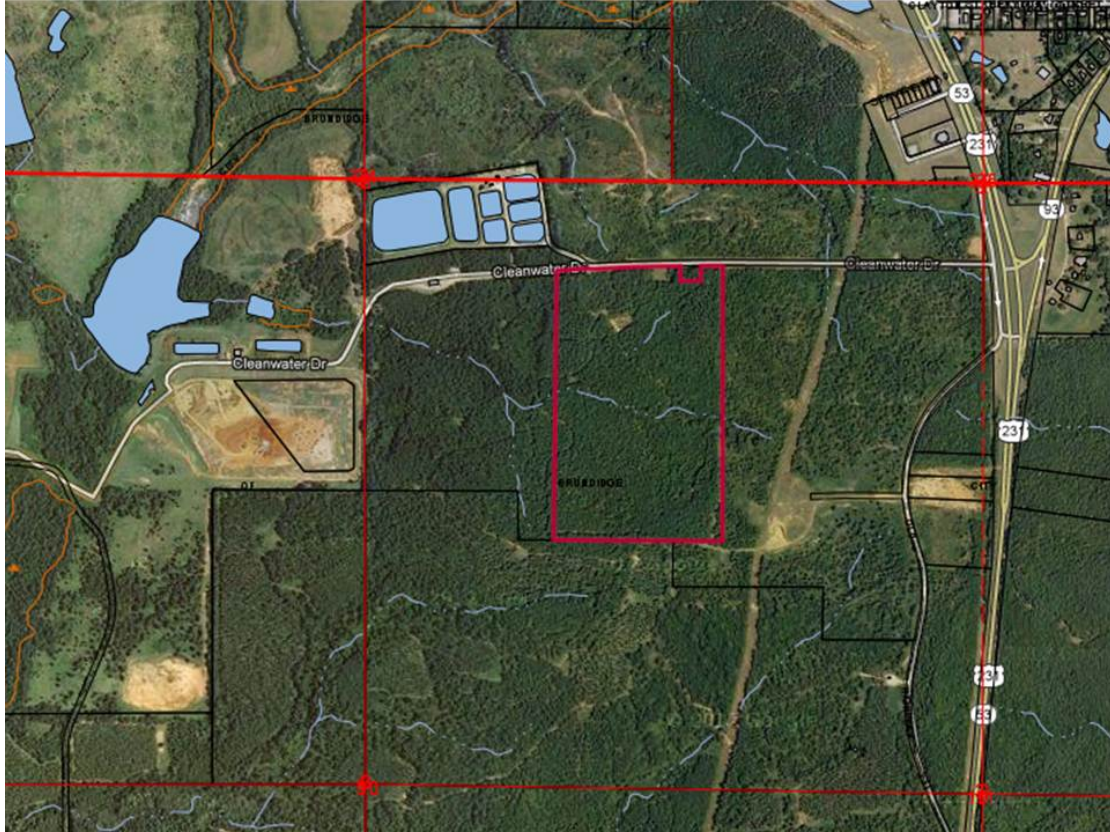


# Site Profile

## Alabama Site Selection Database

### Brundidge Industrial Park

City: Brundidge County: Pike  
Micropolitan Area: Troy



This information has been secured from sources we believe to be reliable; however, we make no representation or warranties, expressed or implied, as to the accuracy of the information.

Economic Development Partnership of Alabama  
www.edpa.org

# Site Profile

## Alabama Site Selection Database

### Brundidge Industrial Park

City: Brundidge    County: Pike  
Micropolitan Area: Troy

